

UTILIZATION AND CAPACITY STUDY

Somers Point Schools Board of Education

September 2019



SOMERS POINT
SCHOOL DISTRICT

FVHD - 5138



Utilization and Capacity Study

Somers Point Schools Board of Education



Table of Contents

Section	Item
	Summary
1	Introduction, Purpose and Goals
2	Methodology
3	Data and Reports (FES DOE Model)
4	Findings
5	Recommendations/Considerations
6	Current Floor Plans
7	Proposed Data Reports and Floor Plans

Utilization and Capacity Study

Somers Point Schools Board of Education



Summary	
A	Goals of the Study
1	The purpose of this study is to evaluate the capacity and utilization of the district's school buildings while considering current and future enrollments, program requirements and other district objectives.
B	Summary and Findings
1	The Findings section provides the results of the study for each district school building.
2	The Recommendations/Considerations section provides an overview and specific recommendations for each school building.
C	Conclusion
1	In general, all district school buildings are generally found to be slightly under utilized when considering the district's practice of maintaining smaller class sizes.
2	Capacity is available in Jordan Road and Dawes Avenue with current enrollment.
3	The Jordan Road School has a some capacity and has flexibility to be used for various uses, but does not have the capacity to be used for Pre-K programs and Board Offices without the renovation of existing spaces.
4	The Dawes Avenue School is best used for grades K-3. There is some capacity open at Dawes Avenue, as the school is currently using full size class rooms for "Intervention Classrooms".

Utilization and Capacity Study

Somers Point Schools Board of Education



1	Introduction, Purpose and Goals
A	Introduction
1	Our team has reviewed the existing facilities and floor plans of each school.
2	We have reviewed each space and confirmed the existing usage with district personnel and the administration.
3	The district has agreed to use the NJDOE FES (Facilities Efficiency Standard) which is the same as the District Practice usage, in our capacity study to calculate the capacity of each space and overall building.
4	The NJDOE FES capacity is 15 students for Pre - K, 21 for grades K - 3, and 23 students for Grades 4 - 8. The capacity for all self contained special education rooms will be 12. The utilization factor for the primary and elementary school will be 90% and the utilization factor for the middle school is 85%.
B	Purpose of the Study
	The purpose of the study is to determine the student capacity of the Jordan Road and Dawes Avenue schools by determining usage of each space, or potential usage of each space. We hope to determine overall capacities of the schools and evaluate the enrollment projections to determine the best usage of the building.
C	Goals of the Study
	The goal of the study is to provide recommendations to the district on the best usage and efficiency of the schools by potentially using only two facilities for grades PK-8 and district offices, and therefore the potential of closing the New York Avenue school.

Somers Point Schools Board of Education

A	Recommendations - Dawes Avenue School
1	The school currently housing grades Pre-K - 3 and will maintain grades as is. population without difficulty, inclusive of special programs such as autism, pullout small group instruction, LLD special education, physical therapy and science departments.
2	The school can house grades K-3 into the facility, and house the following programs: <ul style="list-style-type: none"> • OT/PT • Speech • Art • Music • ESL/ Spanish
4	We would recommend keeping this facility open due its age / vintage and believe it is best suited for the lower grade levels.
B	Recommendations - New York Road School
1	The school currently houses grade Pre-K and District Offices, and is oldest buildings in the district.
2	There is enough room in the building to house at least 5 Pre-K programs for the district.
4	Our recommendation is to abandon this school, and either close or lease to another entity. The only other option is to use a small portion of this building for selected programs, such as the Pre-K program or Board Office.
C	Recommendations - Jordan Road School
1	The Middle School currently houses grades 4 - 8 and is currently designed and used to accommodate upper grade levels with specialized art, music, computer rooms, etc.
2	There is enough room, using the utilization and capacity figures, to house grades 4 -8 in the facility and still have enough room for special programs, using the NJDOE FES Models.
3	There is enough room to either accept the Pre-K program and or the Board of Education offices, but with renovations.

Capacity Study

Schools Board of Education



2	Methodology
1	School capacities are measured using spaces that are "capacity generated" spaces for the grade levels for the district.
2	Capacity generating spaces include general classrooms, science rooms, self-contained special education rooms and other rooms which may contain students during the entire day. For the purposes of this study, at the middle school, rooms are capacity generating if a room is used as a home room.
3	We have used a "District Practice" and the NJDOE model capacity numbers to calculate room capacities.
	<ul style="list-style-type: none"> •NJDOE FES (Facility Efficiency Standards) use the following:
	<ul style="list-style-type: none"> •15 Students for Pre-kindergarten classrooms
	<ul style="list-style-type: none"> •21 Students for kindergarten through third grade classrooms
	<ul style="list-style-type: none"> •23 Students for fourth grade through eighth grade classrooms
	<ul style="list-style-type: none"> •12 Students for self-contained special education classrooms
	Finally, a utilization factor is used for the entire building that provides a realistic and accurate capacity, understanding that a building is rarely at full capacity. We will use the following calculations for each school. These factors are part of the NJDOE FES models. These factors are standard in our industry, and actual utilizations can vary by district
4	<ul style="list-style-type: none"> •Elementary school - 90%
	<ul style="list-style-type: none"> •Middle School - 85%
5	A capacity of a building is a dynamic number that can change as spaces are changed to accommodate programs that are added or removed. A classroom used for third grade one year is 21, while the same room used as a "basic skills instruction" room the next year has a capacity of 0.

Utilization and Capacity Study



Somers Point Schools Board of Education

3	Data and Reports - Current (FES DOE Model)
---	--

SCHOOL CAPACITY WORKSHEET- NJDOE F.E.S Model

DISTRICT	Somers Point Schools Board of Education
SCHOOL	New York Avenue Primary School Current Usage (Grades Pre-K, K)
DATE	February 2019

A	B	C	D= BxC	E	F= BxE
NJDOE F.E.S Model Average Class Size					

GENERAL ACADEMIC CLASSROOMS AND SCIENCE LABS (Scheduled All Periods)

ROOM TYPE/ ROOM NAME (Instructional Spaces Only)	No. of Similar Rooms	Students Per Room (DOE)	Total Capacity	SF Per Room	Total Net SF
Pre-K Classroom (Rms G01, G03)	2	15	30	802	1,604
Pre-K Classroom (Rms G04)	1	15	15	813	813
Pre-K Classroom (Rms G12)	1	15	15	745	745
Pre-K Classroom (Rms 109)	1	15	15	872	872
Pre-K Classroom (Rms 118)	1	15	15	784	784
Small Group Instruction Classroom (Rms 103)	1	0	0	396	396
Total Scheduled Rooms	6		90		5,214

Student Capacity Totals- Presently Utilized Rooms

Student Capacity Prior to Utilization Rate	90
Utilization Rate	90%
Student Capacity- Net	81

Room Totals By Type

Academic Classrooms	6	Academic Classrooms
Resource Room	1	
Total Scheduled Rooms	7	
Specialized Dedicated Classrooms	0	

Average Room Occupancy Calculation

Number of Enrolled Students	71	(Current as of)
# of Scheduled Rooms	6	
Average Occupancy (Class Size) Per Scheduled Room	11.85	

SCHOOL CAPACITY WORKSHEET- NJDOE F.E.S Model

DISTRICT	Somers Point Schools Board of Education
SCHOOL	Dawes Avenue Elementary School Current Usage (Grades Pre-K, K, 1, 2, 3)
DATE	February 2019

A	B	C	D= BxC	E	F= BxE
District Practice Average Class Size					

GENERAL ACADEMIC CLASSROOMS AND SCIENCE LABS (Scheduled All Periods)

ROOM TYPE/ ROOM NAME (Instructional Spaces Only)	No. of Similar Rooms	Students Per Room	Total Capacity	SF Per Room	Total Net SF
General Academic Classroom (Rms 101,102,208,209)	4	21	84	851	3,404
General Academic Classroom (Rms 103, 104, 106, 210, 103, 104, 106, 210,211,212,213,214,215)	9	21	189	859	7,731
General Academic Classroom (Rm 207)	1	21	21	910	910
General Academic Classroom (Rm 107)	1	21	21	900	900
General Academic Classroom (Rm 99)	1	21	21	940	940
General Academic Classroom (Rm 98)	1	21	21	895	895
General Academic Classroom (Rms 105, 217)	2	21	42	866	1,732
General Academic Classroom (Rm 204)	1	21	21	892	892
Resource Room (Rm 202B)	1	0	0	451	451
Resource Room (Rm 205A)	1	0	0	498	498
Resource Room (Rm 202A, 205 B, 216A, 216B)	4	0	0	422	1,688
Special Education (Rm 109)	1	12	12	911	911
Special Education (Rm 110)	1	12	12	960	960
Intervention OT/PT Classroom (Rms 108)	1	0	0	846	846
Intervention Classroom (Rm 206) (Intervention Classroom)	1	0	0	882	882
Total Scheduled Rooms	30		444		21,912

Student Capacity Totals- Presently Utilized Rooms

Student Capacity Prior to Utilization Rate	444
Utilization Rate	90%
Student Capacity- Net	399.6

Room Totals By Type

Academic Classrooms	20	Academic Classroom
Resource Rooms	8	
Total Scheduled Rooms	28	
Specialized Dedicated Classrooms	3	Art, Music (With Permanent Fit-Out) /OT

Average Room Occupancy Calculation

Number of Enrolled Students	384	(Current as of) March 2019
# of Scheduled Rooms	22	
Average Occupancy (Class Size) Per Scheduled Room	17.45	

SCHOOL CAPACITY WORKSHEET- NJDOE F.E.S Model

DISTRICT	Somers Point Schools Board of Education
SCHOOL	Jordan Road School Current Usage (Grades 4, 5, 6, 7, 8)
DATE	February 2019

A	B	C	D= BxC	E	F= BxE
NJ DOE F.E.S Model Average Class Size					

GENERAL ACADEMIC CLASSROOMS AND SCIENCE LABS (Scheduled All Periods)

ROOM TYPE/ ROOM NAME (Instructional Spaces Only)	No. of Similar Rooms	Students Per Room (DOE)	Total Capacity	SF Per Room	Total Net SF
General Academic Classroom (Rms 102)	1	23	23	881	881
General Academic Classroom (Rms 104)	1	23	23	841	841
General Academic Classroom (Rms 105, 107)	2	23	46	776	1,552
General Academic Classroom (Rms 106, 108)	2	23	46	831	1,662
General Academic Classroom (Rms 109)	1	23	23	765	765
General Academic Classroom (Rms 110)	1	23	23	710	710
General Academic Classroom (Rms 111)	1	23	23	1,255	1,255
General Academic Classroom (Rms 114)	1	23	23	815	815
General Academic Classroom (Rms 121)	1	23	23	863	863
General Academic Classroom (Rms 101)	1	23	23	1,175	1,175
General Academic Classroom (Rms 127)	1	23	23	827	827
General Academic Classroom (Rms 125, 132)	2	23	46	808	1,616
General Academic Classroom (Rms 128)	1	23	23	758	758
General Academic Classroom (Rms 130, 134, 136)	3	23	69	819	2,457
General Academic Classroom (Rms 131)	1	23	23	1,036	1,036
General Academic Classroom (Rms 133)	1	23	23	917	917
General Academic Classroom (Rms 103)	1	24	24	1,302	1,302
General Academic Classroom (Rms 135)	1	23	23	799	799
General Academic Classroom (Rms 200, 201, 202, 203, 204, 205)	6	23	138	785	4,710
General Academic Classroom Classroom (Rms 123)	1	23	23	778	778
General Academic Classroom Classroom (Rms 124)	1	23	23	756	756
Special Education Classroom 5th,6th (Rms 126)	1	12	12	1,140	1,140
Special Education Classroom 5th,6th (Rms 129)	1	12	12	1,140	1,140
Special Education Classroom Classroom (Rms 112)	1	12	12	1,321	1,321
Speech Classroom (Rms 208)	1		0	397	397
ELL Classroom (Rms 210)	1		0	404	404
Total Scheduled Rooms	34		749		30,877

Student Capacity Totals- Presently Utilized Rooms

Student Capacity Prior to Utilization Rate	749
Utilization Rate	85%
Student Capacity- Net	636.65

Room Totals By Type

Academic Classrooms	31	Academic Classroom
Resource Rooms	2	
Total Scheduled Rooms	33	
Specialized Dedicated Classrooms	6	Art, Music, Tech, STEM Lab, Foreign Language

Average Room Occupancy Calculation

Number of Enrolled Students	433	(Current as of) March 2019
# of Scheduled Rooms	34	
Average Occupancy (Class Size) Per Scheduled Room	12.74	

Utilization and Capacity Study

Somers Point Schools Board of Education



<h2>4</h2>	<h3>Summary and Findings</h3>
------------	-------------------------------

Below we present our summary of findings pertaining to each school building. The information in the summary is derived from the data forms.

A	Dawes Avenue School Data Summary
----------	---

Existing Room/Student/Capacity Data

1	Number of classrooms presently scheduled- Refer to school capacity worksheet	20	Note 1
2	Number of regular education students enrolled Fall 2014	357	
3	Average class size based upon current scheduling and enrollment	17.85	
4	District practices capacity	17.85	
5	Difference- Actual enrolled v. total district practices capacity	0	

Potential Capacity Data

	Potential Classrooms	2	Note 3
	Potential Added Capacity	42	

Specials and Pull-Outs

	Specialized Spaces	2	Note 4
	Small Group Rooms	6	

Special Education

	Self Contained Special Education (Autism/LLD)	2
	OT/PT	1

A	Dawes Avenue School Notes/Findings/Considerations
<p>Notes</p> <p>1 Capacity generating rooms include general academic classrooms, and specialized academic spaces. Refer to school capacity worksheet for details.</p> <p>2 Potential Classrooms are spaces which can be converted to academic classrooms by renovating existing spaces. The functions currently housed in those spaces would need to be relocated. The conversion may require some level of renovation work.</p> <p>3 The School appears to have a number of small group functions in full-sized classrooms (i.e. existing rooms 108 and 206).</p>	

Utilization and Capacity Study

Somers Point Schools Board of Education



4	Summary and Findings
----------	-----------------------------

B	Jordan Road Elementary School Data Summary
----------	---

Existing Room/Student/Capacity Data

	Number of classrooms presently scheduled- Refer to school capacity worksheet	31	Note 1
	Number of regular education students enrolled Fall 2014	424	
	Average class size based upon current scheduling and enrollment	13.68	
	District practices capacity	13.68	
	Difference- Actual enrolled v. total district practices capacity	0	

Potential Capacity Data

	Unused Classrooms	0	Note 3
	Potential Classrooms	0	Note 4
	Unused Small Group	0	Note 5
	Potential Added Capacity	0	

Specials and Pull-Outs

	Science Labs	0	
	Specials- Gym, Art, Instr Music, Vocal Music, Science, Spanish	6	
	Pull Outs- Resource, ESL, Speech, AIS, etc.	2	Note 5

Special Education

	Self Contained Special Education	3
	OT/PT	1

Utilization and Capacity Study

Somers Point Schools Board of Education



4	Summary and Findings
---	----------------------

B	Jordan Road School Notes/Findings/Considerations
Notes	
1	Capacity generating rooms include general academic classrooms, and specialized Unused classrooms are rooms which are not presently scheduled during the school day.
2	These rooms may house certain functions. All rooms are appropriately sized as classrooms and may be used with little or no modifications required.
3	Potential classrooms are full-sized classrooms being currently used for instructional functions that do not require a full sized classroom.
4	Potential small group classrooms are small rooms (approx. 400 SF) that are being currently used for something other than instructional functions

SCHOOL CAPACITY WORKSHEET- NJDOE F.E.S Model

OPTION A

DISTRICT	Somers Point Schools Board of Education
SCHOOL	Jordan Road School Proposed Usage (Grades 4-8 + Pre-K and Board Offices)
DATE	February 2019

A	B	C	D= BxC	E	F= BxE
District Practice Average Class Size		23			

GENERAL ACADEMIC CLASSROOMS AND SCIENCE LABS (Scheduled All Periods)

ROOM TYPE/ ROOM NAME (Instructional Spaces Only)	No. of Similar Rooms	Students Per Room	Total Capacity	SF Per Room	Total Net SF
General Academic Classroom (Rms 102)	1	23	23	881	881
General Academic Classroom (Rms 101)	1	23	23	1,125	1,125
General Academic Classroom (Rms 103)	1	23	23	1,302	1,302
General Academic Classroom (Rms 104)	1	23	23	841	841
General Academic Classroom (Rms 105, 107)	2	23	46	776	1,552
General Academic Classroom (Rms 106, 108)	2	23	46	831	1,662
General Academic Classroom (Rms 109)	1	23	23	765	765
General Academic Classroom (Rms 110)	1	23	23	710	710
General Academic Classroom (Rms 113)	1	23	23	815	815
General Academic Classroom (Rms 121)	1	23	23	863	863
General Academic Classroom (Rms 127)	1	23	23	827	827
General Academic Classroom (Rms 132)	1	23	23	808	808
General Academic Classroom (Rms 123)	1	23	23	778	778
General Academic Classroom (Rms 130, 134, 136)	3	23	69	819	2,457
General Academic Classroom (Rms 131)	1	23	23	1,036	1,036
General Academic Classroom (Rms 133)	1	23	23	917	917
General Academic Classroom (Rms 135)	1	23	23	799	799
General Academic Classroom (Rms 124)	1	23	23	756	756
Special Education Classroom (Rms 126,129)	1	12	12	1,140	1,140
Special Education Classroom (Rms 112)	1	12	12	1,321	1,321
Pre-K Classroom (Rms 201)	1	15	15	1,002	1,002
Pre-K Classroom (Rms 202,203,204)	3	15	45	1,003	3,009
Pre-K Classroom(Rms 205)	1	15	15	1,001	1,001
OT/PT Classroom (Rms 206)	1	0	0	384	384
Speech Classroom (Rms)	1		0	397	397
Total Scheduled Rooms	31		605		27,148

Student Capacity Totals- Presently Utilized Rooms

Student Capacity Prior to Utilization Rate	605
Utilization Rate	85%
Student Capacity- Net	514.25

Room Totals By Type

Academic Classrooms	31	Academic Classrooms
Resource Rooms	1	
Total Scheduled Rooms	32	
Specialized Dedicated Classrooms	5	Art, Music, Tech, STEM Lab, Foreign Language

Average Room Occupancy Calculation

Number of Enrolled Students	433	(Current as of) March 2019
# of Scheduled Rooms	32	
Average Occupancy (Class Size) Per Scheduled Room		

SCHOOL CAPACITY WORKSHEET- NJDOE F.E.S Model

OPTION B

DISTRICT	Somers Point Schools Board of Education
SCHOOL	Jordan Road School Proposed Usage (Grades 4-8 + Pre-K)
DATE	February 2019

A	B	C	D= BxC	E	F= BxE
District Practice Average Class Size					

GENERAL ACADEMIC CLASSROOMS AND SCIENCE LABS (Scheduled All Periods)

ROOM TYPE/ ROOM NAME (Instructional Spaces Only)	No. of Similar Rooms	Students Per Room (DOE)	Total Capacity	SF Per Room	Total Net SF
General Academic Classroom (Rms 102)	1	23	23	881	881
General Academic Classroom (Rms 104)	1	23	23	841	841
General Academic Classroom (Rms 105, 107)	2	23	46	776	1,552
General Academic Classroom (Rms 106, 108)	2	23	46	831	1,662
General Academic Classroom (Rms 109)	1	23	23	765	765
General Academic Classroom (Rms 110)	1	23	23	710	710
General Academic Classroom (Rms 111)	1	23	23	1,255	1,255
General Academic Classroom (Rms 114)	1	23	23	815	815
General Academic Classroom (Rms 121)	1	23	23	863	863
General Academic Classroom (Rms 101)	1	23	23	1,175	1,175
General Academic Classroom (Rms 127)	1	23	23	827	827
General Academic Classroom (Rms 125, 132)	2	23	46	808	1,616
General Academic Classroom (Rms 128)	1	23	23	758	758
General Academic Classroom (Rms 130, 134, 136)	3	23	69	819	2,457
General Academic Classroom (Rms 131)	1	23	23	1,036	1,036
General Academic Classroom (Rms 133)	1	23	23	917	917
General Academic Classroom (Rms 103)	1	24	24	1,302	1,302
General Academic Classroom (Rms 135)	1	23	23	799	799
General Academic Classroom Classroom (Rms 123)	1	23	23	778	778
General Academic Classroom Classroom (Rms 124)	1	23	23	756	756
Special Education Classroom 5th,6th (Rms 126)	1	12	12	1,140	1,140
Special Education Classroom 5th,6th (Rms 129)	1	12	12	1,140	1,140
Special Education Classroom Classroom (Rms 112)	1	12	12	1,321	1,321
Speech Classroom (Rms 208)	1		0	397	397
ELL Classroom (Rms 210)	1		0	404	404
Pre-K Classroom (Rms 201,203)	2	15	30	1,000	2,000
Pre-K Classroom (Rms 202,204,205)	3	15	45	1,077	3,231
Total Scheduled Rooms	30		749		26,167

Student Capacity Totals- Presently Utilized Rooms

Student Capacity Prior to Utilization Rate	749
Utilization Rate	85%
Student Capacity- Net	636.65

Room Totals By Type

Academic Classrooms	30	Academic Classroom
Resource Rooms	2	
Total Scheduled Rooms	32	
Specialized Dedicated Classrooms	6	Art, Music, Tech, STEM Lab, Foreign Language

Average Room Occupancy Calculation

Number of Enrolled Students	433	(Current as of) March 2019
# of Scheduled Rooms	30	
Average Occupancy (Class Size) Per Scheduled Room		

DISTRICT	Somers Point Schools Board of Education
SCHOOL	Jordan Road School Proposed Usage (Grades 4-8 and Board Offices)
DATE	February 2019

A	B	C	D= BxC	E	F= BxE
District Practice Average Class Size					

GENERAL ACADEMIC CLASSROOMS AND SCIENCE LABS (Scheduled All Periods)

ROOM TYPE/ ROOM NAME (Instructional Spaces Only)	No. of Similar Rooms	Students Per Room (DOE)	Total Capacity	SF Per Room	Total Net SF
General Academic Classroom (Rms 102)	1	23	23	881	881
General Academic Classroom (Rms 104)	1	23	23	841	841
General Academic Classroom (Rms 105, 107)	2	23	46	776	1,552
General Academic Classroom (Rms 106, 108)	2	23	46	831	1,662
General Academic Classroom (Rms 109)	1	23	23	765	765
General Academic Classroom (Rms 110)	1	23	23	710	710
General Academic Classroom (Rms 111)	1	23	23	1,255	1,255
General Academic Classroom (Rms 114)	1	23	23	815	815
General Academic Classroom (Rms 121)	1	23	23	863	863
General Academic Classroom (Rms 101)	1	23	23	1,175	1,175
General Academic Classroom (Rms 127)	1	23	23	827	827
General Academic Classroom (Rms 125, 132)	2	23	46	808	1,616
General Academic Classroom (Rms 128)	1	23	23	758	758
General Academic Classroom (Rms 130, 134, 136)	3	23	69	819	2,457
General Academic Classroom (Rms 131)	1	23	23	1,036	1,036
General Academic Classroom (Rms 133)	1	23	23	917	917
General Academic Classroom (Rms 103)	1	24	24	1,302	1,302
General Academic Classroom (Rms 135)	1	23	23	799	799
General Academic Classroom (Rms 200, 201, 202, 203, 204, 205)	6	23	138	785	4,710
General Academic Classroom Classroom (Rms 123)	1	23	23	778	778
General Academic Classroom Classroom (Rms 124)	1	23	23	756	756
Special Education Classroom 5th,6th (Rms 126)	1	12	12	1,140	1,140
Special Education Classroom 5th,6th (Rms 129)	1	12	12	1,140	1,140
Special Education Classroom Classroom (Rms 112)	1	12	12	1,321	1,321
Speech Classroom (Rms 208)	1		0	397	397
ELL Classroom (Rms 210)	1		0	404	404
Total Scheduled Rooms	31		749		30,877

Student Capacity Totals- Presently Utilized Rooms

Student Capacity Prior to Utilization Rate	749
Utilization Rate	85%
Student Capacity- Net	636.65

Room Totals By Type

Academic Classrooms	31	Academic Classroom
Resource Rooms	2	
Total Scheduled Rooms	33	
Specialized Dedicated Classrooms	3	Music, STEM Lab

Average Room Occupancy Calculation

Number of Enrolled Students	433	(Current as of) March 2019
# of Scheduled Rooms	31	
Average Occupancy (Class Size) Per Scheduled Room		



Utilization and Capacity Study

Somers Point Schools Board of Education

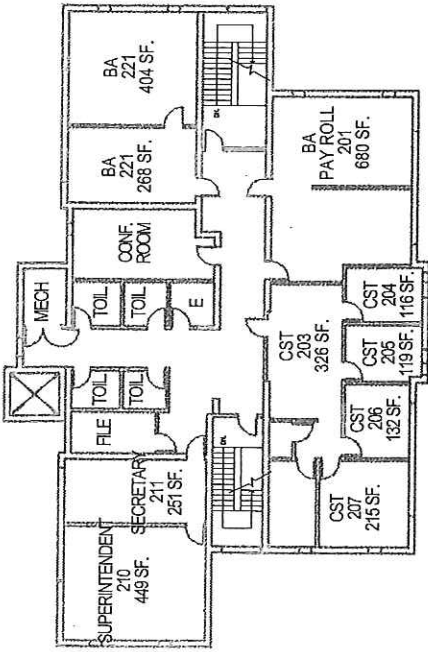
5	Recommendations/Considerations		
	Overview		
1	The utilization study appears to support the district's goals as follows:		
	a	Maintain smaller class sizes	
	b	Provide a continuum of educational programs starting in Kindergarten. These programs include Art, Music, Science and World Languages.	
2	All schools are expected to maintain current enrollment (based upon the district's latest Demographer's Report).		
3	Dawes Avenue & Jordan Road are presently under-utilized. Large classrooms are being used for small group instruction and other program spaces normally associated with smaller rooms. Some classroom sizes are much smaller than the DOE model.		
4	We offer potential solution as follows:		
	Options	School	Grade Configurations
	A	New York Ave	Closed
		Jordan Ave	4-8 Pre-K Board Offices
		Dawes Ave	K-3
	B	New York Ave	Board Offices
		Dawes Ave	K-3
		Jordan Road	4-8 / Pre-K
	C	New York Ave.	Pre-K
		Dawes Ave	K-3
		Jordan Road	4-8 Board Offices
	D	New York Ave.	Pre-K Board Offices
		Jordan Road	4 - 8
		Dawes Ave	K-3

Utilization and Capacity Study

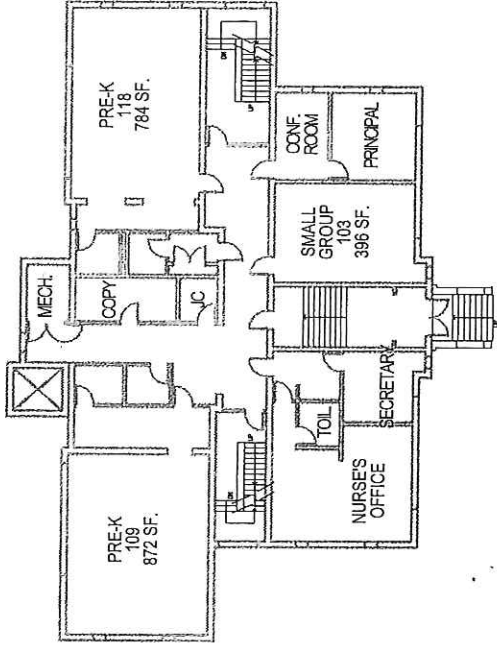
Somers Point Schools Board of Education



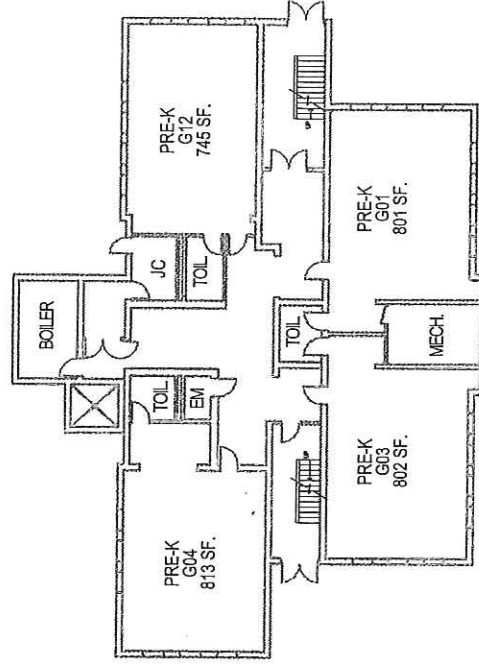
6	Current Floor Plans
---	---------------------



SECOND FLOOR PLAN



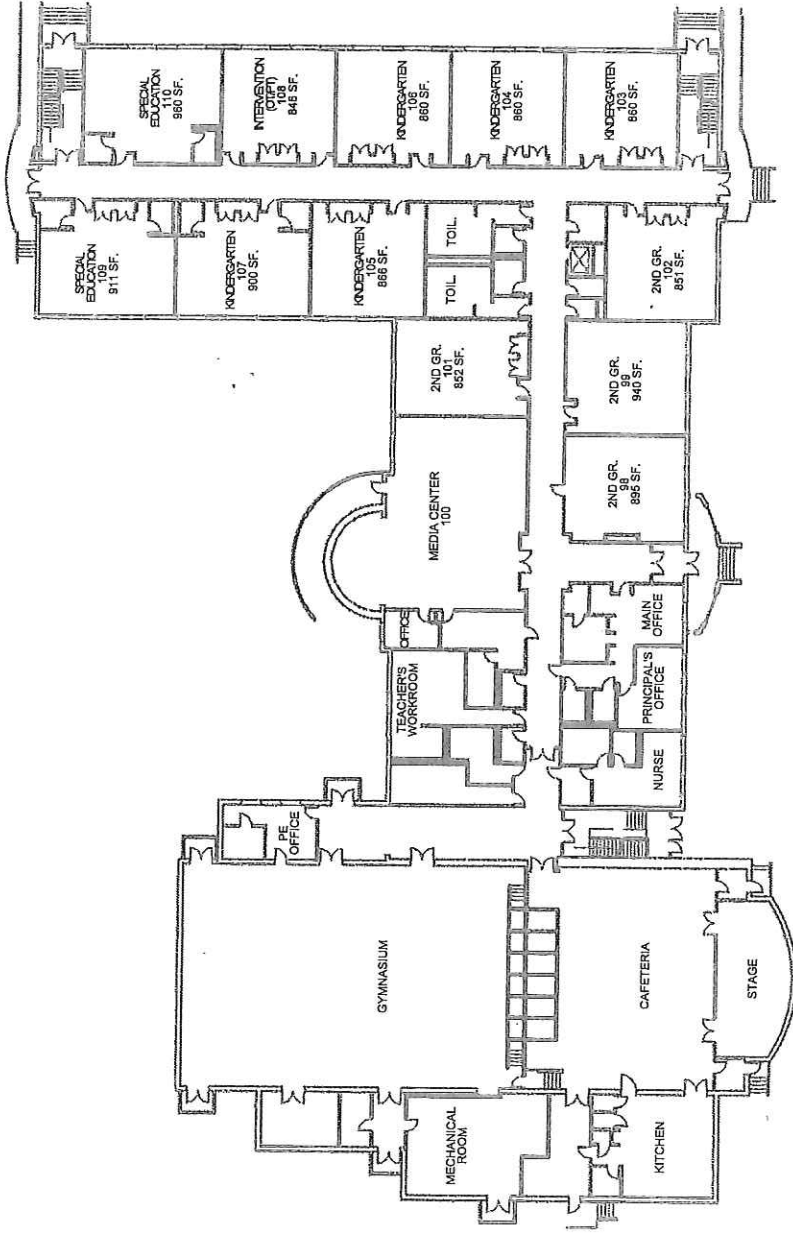
FIRST FLOOR PLAN



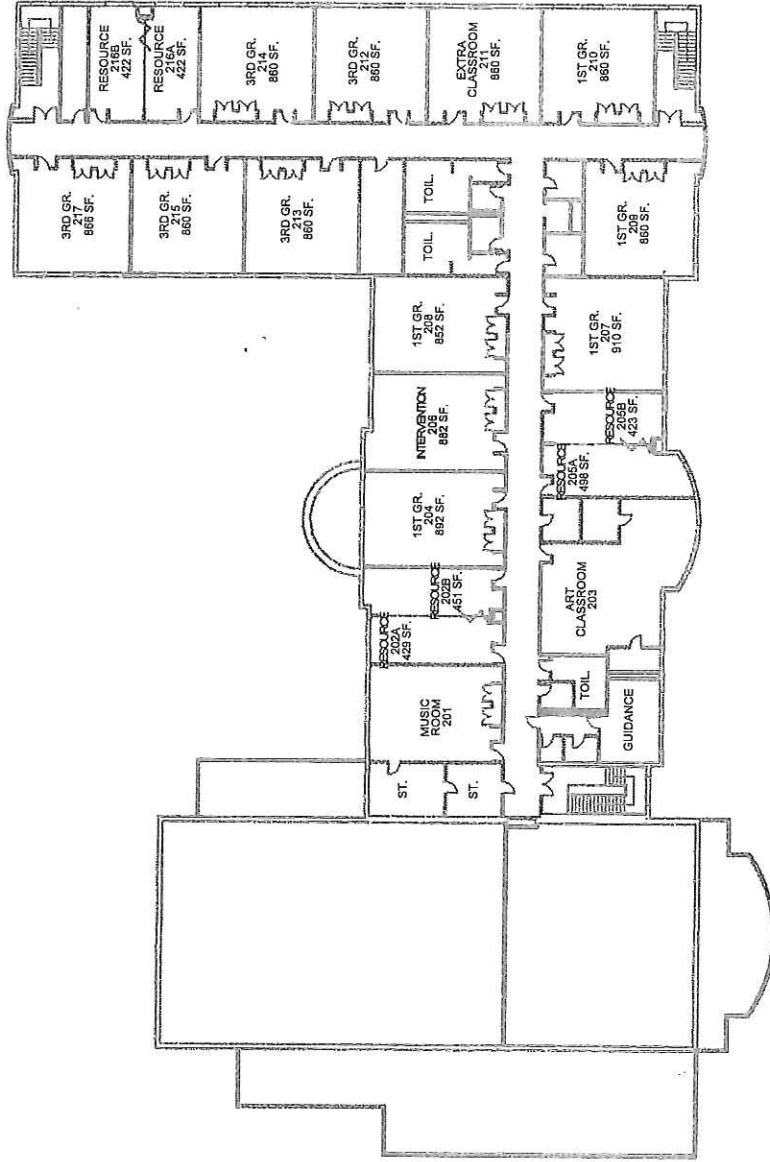
GROUND FLOOR PLAN

NEW YORK ROAD SCHOOL FLOOR PLAN - EXISTING

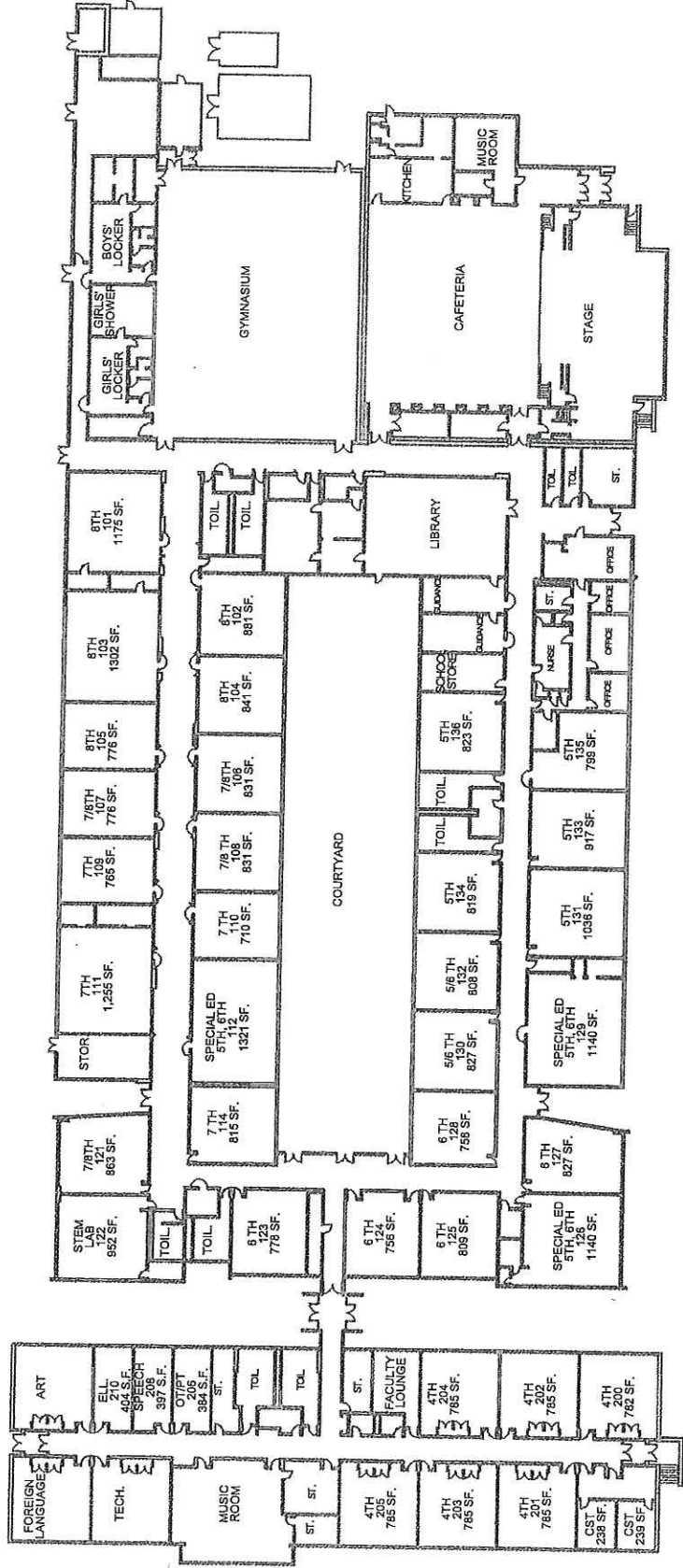




DAWES AVENUE SCHOOL FIRST FLOOR PLAN- EXISTING



DAWES AVENUE SCHOOL SECOND FLOOR PLAN- EXISTING



JORDAN ROAD SCHOOL FLOOR PLAN - EXISTING

Utilization and Capacity Study

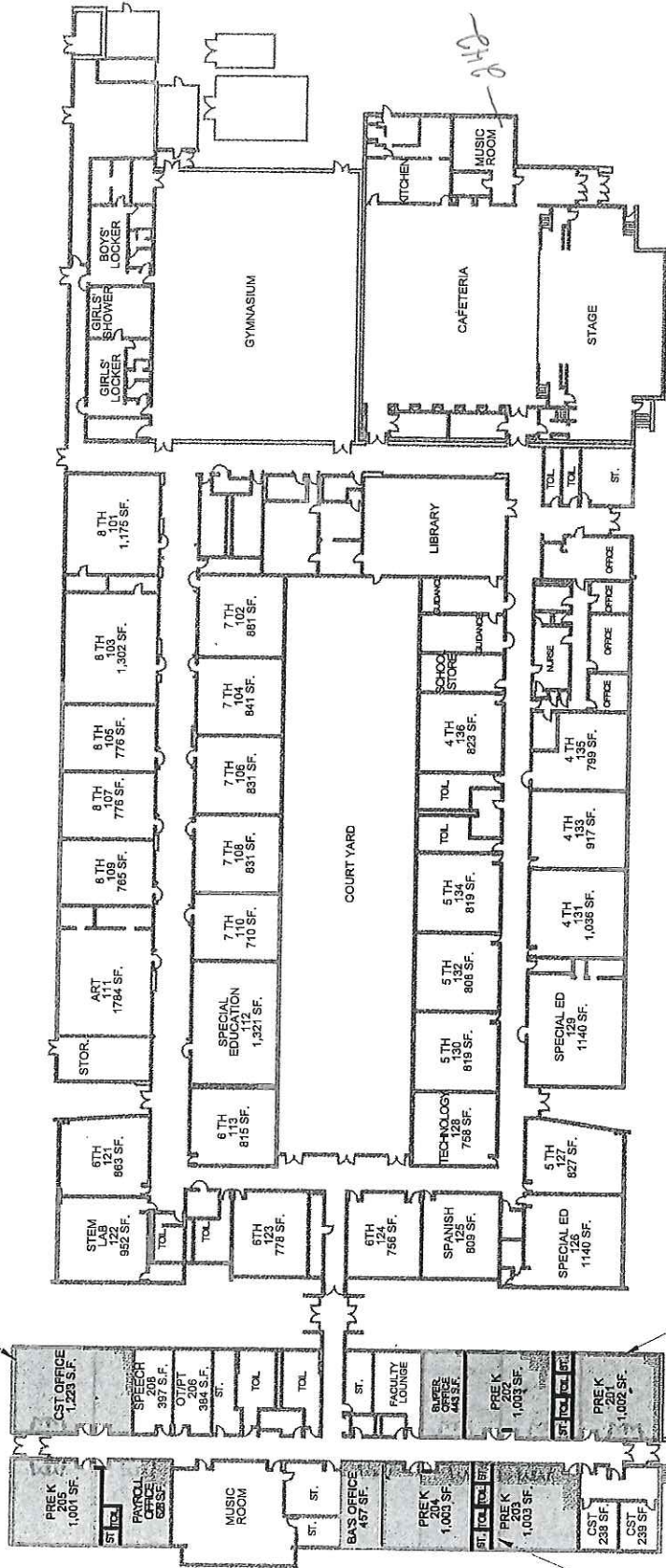
Somers Point Schools Board of Education



7	Proposed Data Reports and Floor Plans
---	---------------------------------------

RENO. SQ FT = 7,763

2,852 SQ FT



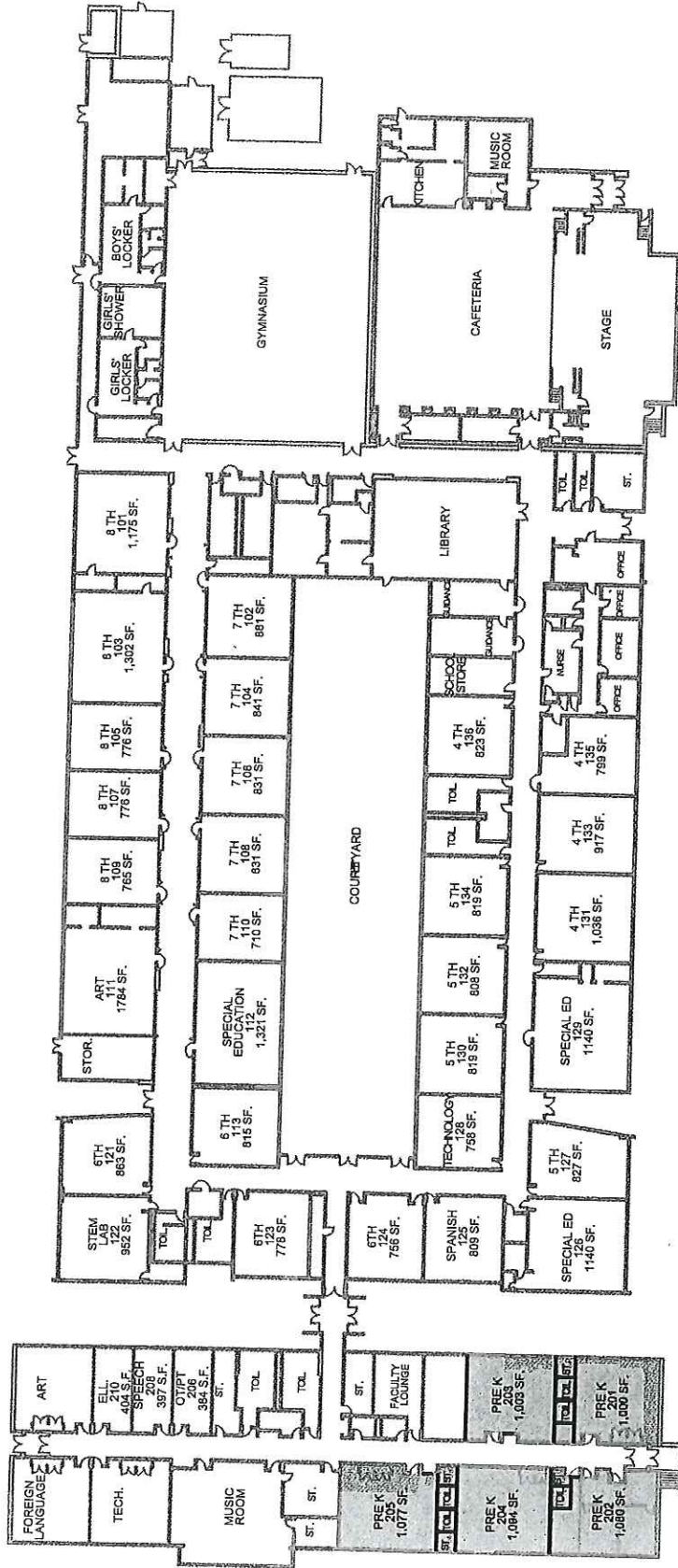
2,463 SQ FT

2,448 SQ FT

JORDAN ROAD SCHOOL FLOOR PLAN - PROPOSED OPTION A

FVHD architects planners
 EST 1998
 Fraytak Veisz Hopkins Duthie P.C.

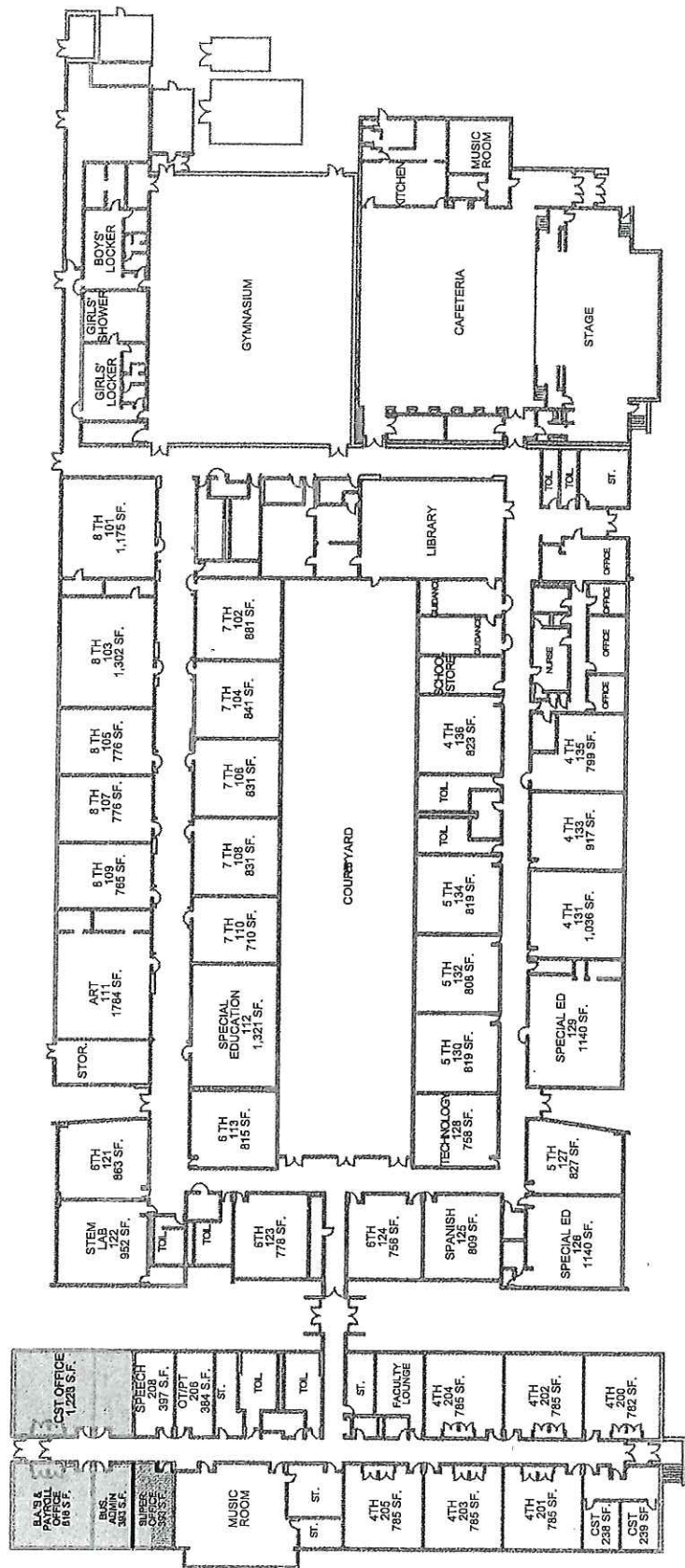
RENO. SQ FT = 5,254



JORDAN ROAD SCHOOL FLOOR PLAN - PROPOSED OPTION B

FVHD architects planners
 Fraytak Veisz Hopkins Duthie PC

RENO. SQ FT = 2,825



JORDAN ROAD SCHOOL FLOOR PLAN - PROPOSED OPTION C

